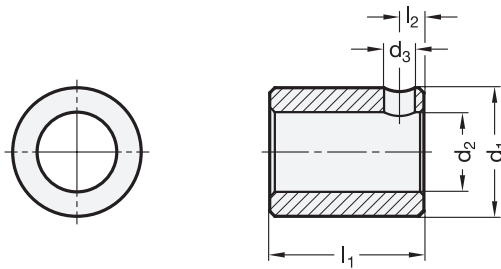




ELESA Original design RB51/RB52/RB50

ROHS COMPLIANT
Rost frei
Inox
Stainless
Steel



¹ d ₁ f7	² d ₂ H7 Bore							³ l ₁	d ₃	l ₂	for position indicators
10	B 6	B 8	-	-	-	-	-	20	3,2	2,5	GN 955
14	B 6	B 8	B 10	B 12	-	-	-	20	4,25	3,5	GN 954 / GN 9054
20	B 6	B 8	B 10	B 12	B 14	B 15	B 16	20	5,5	4,5	GN 953 / GN 9053

Specification

- Steel blackened —
- Stainless Steel AISI 304 **NI**
- ISO-Fundamental tolerances → Page 1479
- Stainless Steel characteristics → Page 1489
- RoHS compliant

⁴

Information

With the help of adapter bushings GN 952.1 position indicators can be adapted to accept different smaller spindle diameters.

The adapter bushings are supplied with a set screw.

see also...

- Position indicators GN 953 → Page 296
- Position indicators GN 954 → Page 298
- Position indicators GN 955 → Page 300
- Position indicators GN 9053 → Page 302
- Position indicators GN 9054 → Page 304

How to order (Steel)

¹ ² ³
GN 952.1 - 14 - B12 - 20

1	d ₁
2	d ₂
3	l ₁

How to order (Stainless Steel)

¹ ² ³ ⁴
GN 952.1 - 10 - B8 - 20 - NI

1	d ₁
2	d ₂
3	l ₁
4	Material