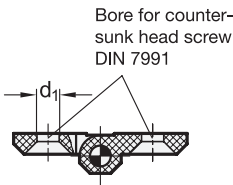
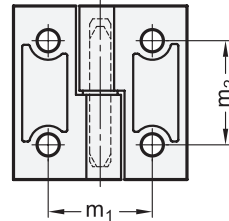
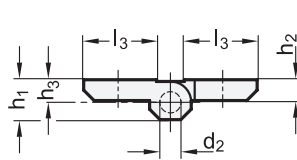
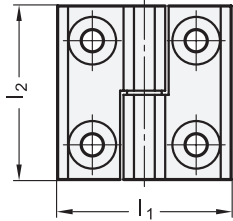
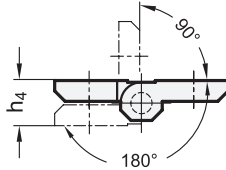




ELESA original design CFMY.



Swivelling range



right version
Identification no. 1



left version
Identification no. 2

4 Type

- A 2x2 bores for countersunk screw

5 Identification no.

- 1 fixed bearing (pin) right
- 2 fixed bearing (pin) left

1 2 3

l_1	l_2	$d_1 +0,5$	d_2	h_1	h_2	h_3	h_4	l_3	$m_1 \pm 0,25$	$m_2 \pm 0,25$
40	40	4	4	9	5	5,5	11	14	25	25
50	50	6	6	11,5	6	6,5	13	18	30	30
60	60	6	6	15	8	8,5	17	26	36	36
60	60	8	8	15	8	8,5	17	26	36	36

Specification

- Plastic (Polyamide PA)
 - glass fiber reinforced
 - temperature resistant up to 100 °C
 - black, matte



- Pin
 - Plastic (Polyamide PA)
 - glass fiber reinforced

- Load rating information → Page XYZ
- Plastic characteristics → Page 1483

- RoHS compliant

6

Information

see also...

- Hinges GN 337 (Zinc die casting / Stainless Steel) → Page 877
- Hinges GN 161.1 (Zinc die casting) → Page 896
- Hinges GN 161.2 (Zinc die casting) → Page 897
- Hinges GN 237.1 (not detachable) → Page 882

How to order

1	l_1
2	l_2
3	d_1
4	Type
5	Identification no.
6	Color

GN 337.1-60-60-8-A-1-SW

