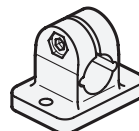
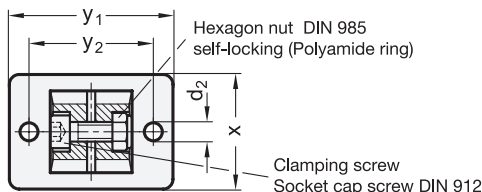
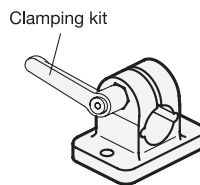
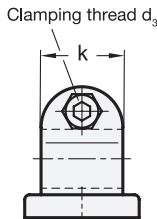
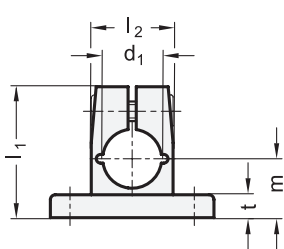


GN 145

Aluminum / Stainless Steel

Flanged connector clamps

with 2 mounting holes



Inch sizes available

2 Identification no.

2 with one Stainless Steel-Clamping screw DIN 912

d ₁ Bohrung B Aluminum	Stainless Steel	d ₂	d ₃ Clamping screw	k Clamping length	l ₁	l ₂	m	t	x	y ₁	y ₂	Clamping kit for d ₃	
												Lever zinc die casting	Lever Stainless Steel
B 10	-	5,5	M6	25	40	25	18	7	35	50	38	GN 911-M6-22	GN 911.3-M6-22
B 12	B 12	5,5	M6	25	40	25	18	7	35	50	38	GN 911-M6-22	GN 911.3-M6-22
B 14	B 14	5,5	M6	25	40	25	18	7	35	50	38	GN 911-M6-22	GN 911.3-M6-22
B 15	B 15	5,5	M6	25	40	25	18	7	35	50	38	GN 911-M6-22	GN 911.3-M6-22
B 16	B 16	5,5	M6	25	40	25	18	7	35	50	38	GN 911-M6-22	GN 911.3-M6-22
B 18	B 18	5,5	M6	25	40	25	18	7	35	50	38	GN 911-M6-22	GN 911.3-M6-22
-	B 20	5,5	M6	25	40	25	18	7	35	50	38	GN 911-M6-22	GN 911.3-M6-22

Specification

- Aluminum
 - plastic coated black, RAL 9005, textured finish **SW**
 - blank matt shot-blasted **BL**
- Stainless Steel AISI CF-8 **NI** matt shot-blasted
- Clamping bores mechanically machined
- Socket cap screws DIN 912 Stainless Steel AISI 304
- Hexagon nuts DIN 985 Stainless Steel AISI 304
- Stainless Steel characteristics → Page 1489
- RoHS compliant

Accessory

- Clamping kits GN 911 / GN 911.3 → Page 1242

Information

The clamping bores of GN 145 flanged connector clamps are mechanically machined and designed for construction tubes GN 990 or DIN 2391, DIN 2395 and DIN 2462 respectively.

GN 145 flanged connector clamps are also suitable for mounting on **profile systems**.

The standard version of the clamping screw is a socket cap screw with hexagonal socket DIN 912. It can be replaced by a clamping kit GN 911 / GN 911.3 (article code see table of dimensions).

see also...

- Base plate clamp mountings GN 473 → Page 1246
- Construction tubes GN 990 → Page 1277
- Retaining tubes / Retaining rods GN 480.1 → Page 1276
- Flanged linear actuator connector GN 145.1 → Page 1332
- Assembly sets for profile systems 30 / 40 GN 965 → Page 1428
- Assembly sets for profile systems 30 / 40 / 45 GN 968 → Page 1438

How to order (Aluminum)

GN 145-B14-2-SW

- d₁
- Identification no.
- Finish

How to order (Stainless Steel)

GN 145-B12-2-NI

- d₁
- Identification no.
- Material